



*"It is easier to  
build strong children  
than to  
repair broken men."*

– Frederick Douglass



# One Child. One Place. One Time.

When a child is heard, he can be helped. No child should suffer from abuse, but when it does happen, they need a safe place to go. Somewhere with people who will listen and then act quickly and appropriately. Project Harmony is that place.

Project Harmony is a community-based child advocacy center that provides hope for victims of child abuse and neglect in eastern Nebraska and southwest Iowa. In 2010 alone, the agency provided medical services, interviews, assessments and referrals for ongoing treatment to approximately 2,200 children in our community.

Through our collaborative partnerships with law enforcement, human services and the medical community, Project Harmony's team of professionals work together to protect our children, prosecute the offenders and educate the community on issues related to abuse and neglect.

Join our fight today by becoming a member of the Project Harmony Service League. ★



---

Project Harmony  
Child Protection Center  
11949 Q Street  
Omaha, NE 68137-3595

NON PROFIT ORG.  
US POSTAGE  
**PAID**  
OMAHA NE  
PERMIT NO. 71

*“Safety and security don’t just happen, they are the result of collective consensus and public investment. We owe our children, the most vulnerable citizens in our society, a life free of violence and fear.”*

– Nelson Mandela

## Protecting Children. Protecting Their Future.

This is your chance to make the world a better place – one child at a time. As a member of the Project Harmony Service League, you will help provide effective, immediate support to children and their families when they need it most, through an organization that serves as a model of child protection nationwide. You will make a real difference in the lives of thousands of children.

As a member of the Service League, you will become part of a shared mission to:

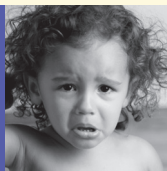
*Protect and support children,  
collaborate with professionals  
and engage the community  
to end child abuse and neglect.*

## You Can Help In Your Way.

When you become a member of the Project Harmony Service League, you’re helping abused children in a meaningful way. You can choose how you want to contribute – volunteer at the center, help raise funds, enhance public awareness or take part in one of our 2011 signature events:

- ★ *Speaking of Children Luncheon, March 2*
- ★ *Harmony in Art — The Old Market Artist Gallery, March 26*
- ★ *Blue Ribbons for Child Abuse, April*
- ★ *Project Harmony Golf Invitational, June 14*
- ★ *Project Harmony Poker Run, July 30*
- ★ *Halfway to St. Patrick’s Day Celebration, September 23*
- ★ *Project Harmony Annual Meeting, November*

Best of all, you can take pride in knowing that you are part of an organization that helps children in need. You will enjoy benefits that include a membership directory and invitations to all Project Harmony events.



DESPAIR



LOST



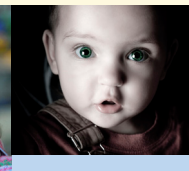
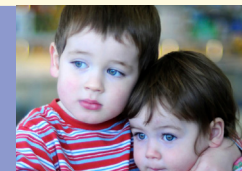
SEARCHING



REACHING



HOPE



PROTECT

## Working. Together.

Our members come from many different backgrounds, professions and experiences, yet we share the common desire to help the children and families served by Project Harmony.

### Project Harmony Service League 2011 Executive Committee

Robert Frederick, *President*  
Sherry Falke, *Vice President*  
Amanda Chantiam, *Treasurer*

Jim Codr, *Secretary*  
Karen Brouillette, *Membership/Outreach Chair*  
Christine Benson, *Events Chair*

### Board of Directors 2011

Denise Bartels  
Mike Bird  
Deb Bogard  
Debbie Boler  
Brian Doyle  
Matthew Enenbach  
Judi Finkle

Burke Harr  
Patty Jansen  
Joe Johns  
Marci Keim  
Kate Kestel  
Don Kleine

Liz Langan  
Natalie Mason  
Micki Pane  
Yvonne Pflug  
Amonique Strehle  
Katie Witt  
Molly Zabrowski

402.595.1326

Please visit [www.projectharmony.com](http://www.projectharmony.com)

Special thanks to: Creative Press & Design and Diamond Marketing Solutions



**Yes!** I want to join the Project Harmony Service League.

2011 Membership Levels (please check one):

☆ **Patron \$100+**    ☆ **Sustainer \$50**    ☆ **Contributor \$25**

Please accept my donation of \$ \_\_\_\_\_ in lieu of membership.

☆ My check is enclosed

☆ Please charge my credit card # \_\_\_\_\_ Exp \_\_\_\_\_

☆ Please send an Automatic Bank Withdrawal Form to my e-mail address:

OR go to [www.projectharmony.com](http://www.projectharmony.com) to join online.

NAME(s) \_\_\_\_\_

ADDRESS \_\_\_\_\_

CITY, STATE, ZIP \_\_\_\_\_

PHONE \_\_\_\_\_  
(work) (home) (cell)

E-MAIL \_\_\_\_\_

(for Project Harmony communication only)  Include in membership directory  Do NOT include in membership directory

**I would like to help!** (indicate your interests)

☆ **Speaking of Children**

☆ **Project Harmony Poker Run**

☆ **Harmony in Art**

☆ **Halfway to St. Patrick's Day Celebration**

☆ **Blue Ribbons for Child Abuse**

☆ **Office/Mailings**

☆ **Project Harmony Golf Invitational**

Please make your check payable to: Project Harmony Service League

Membership dues are 100% deductible and directly impact Project Harmony's ability to continue its good works.

Mail before May 1, 2011 to: Karen Brouillette, *Membership/Outreach Chair*  
Project Harmony Service League, 11949 Q Street, Omaha, NE 68137

☆ Renewal Membership

☆ New Membership

☆ My dues are my participation at this time.



JOY



LOVE

